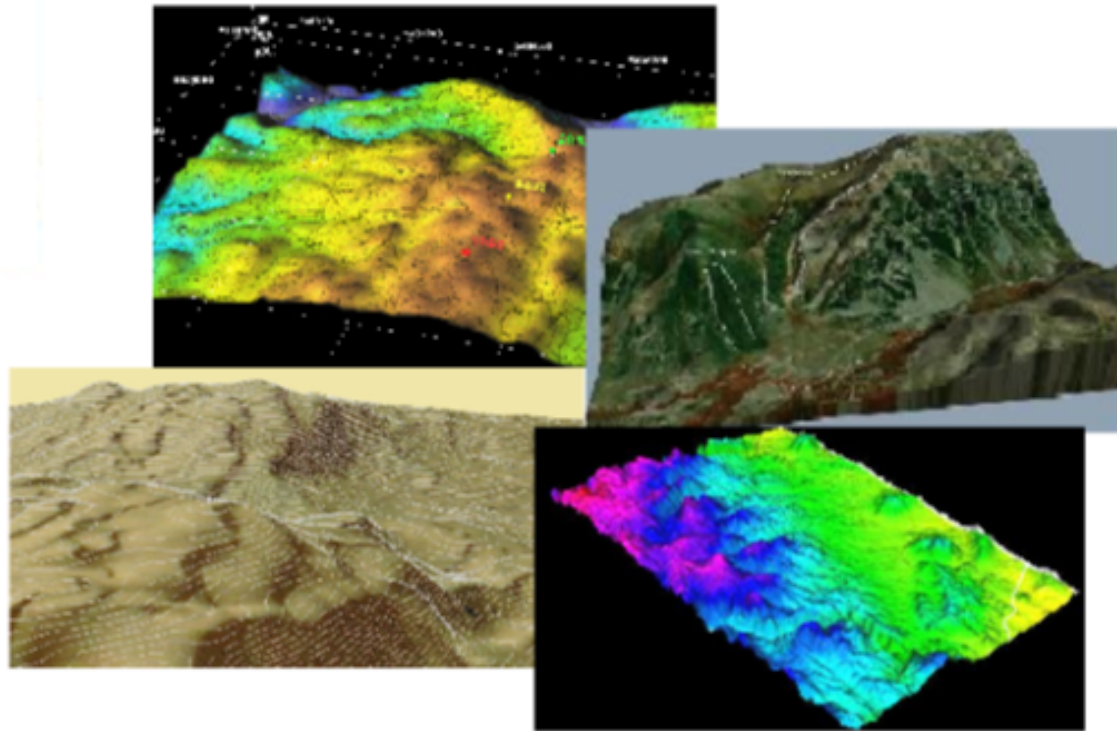


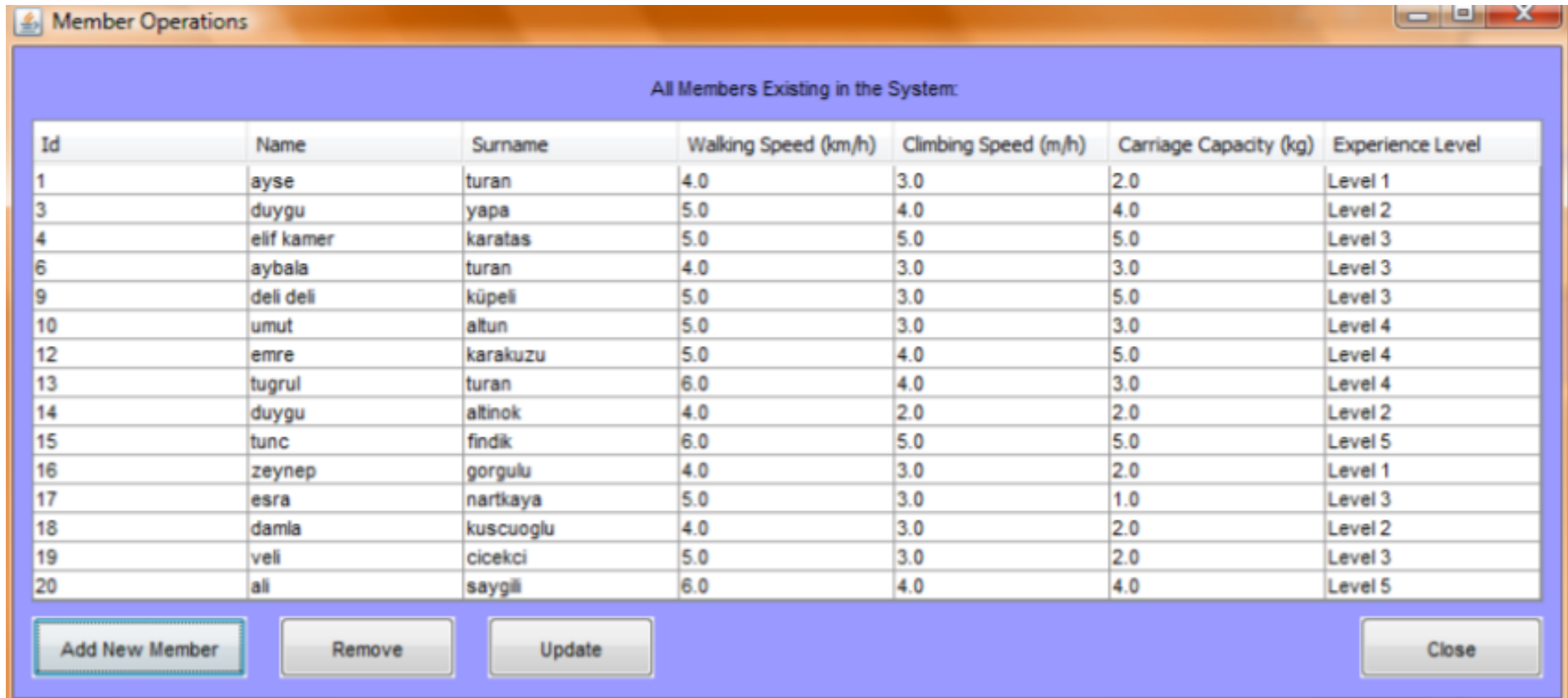
DEMO - 1



What we have done...

- Ayşe has implemented Member and Equipment modules, database related operations. (Insert, delete, update etc)
 - Duygu Yapa has started trials on Geokit and ArcGIS.
 - Elif has started implementing A* algorithm.
 - Duygu Altınok has started implementing D* algorithm.
-

ScreenShots



Member Operations

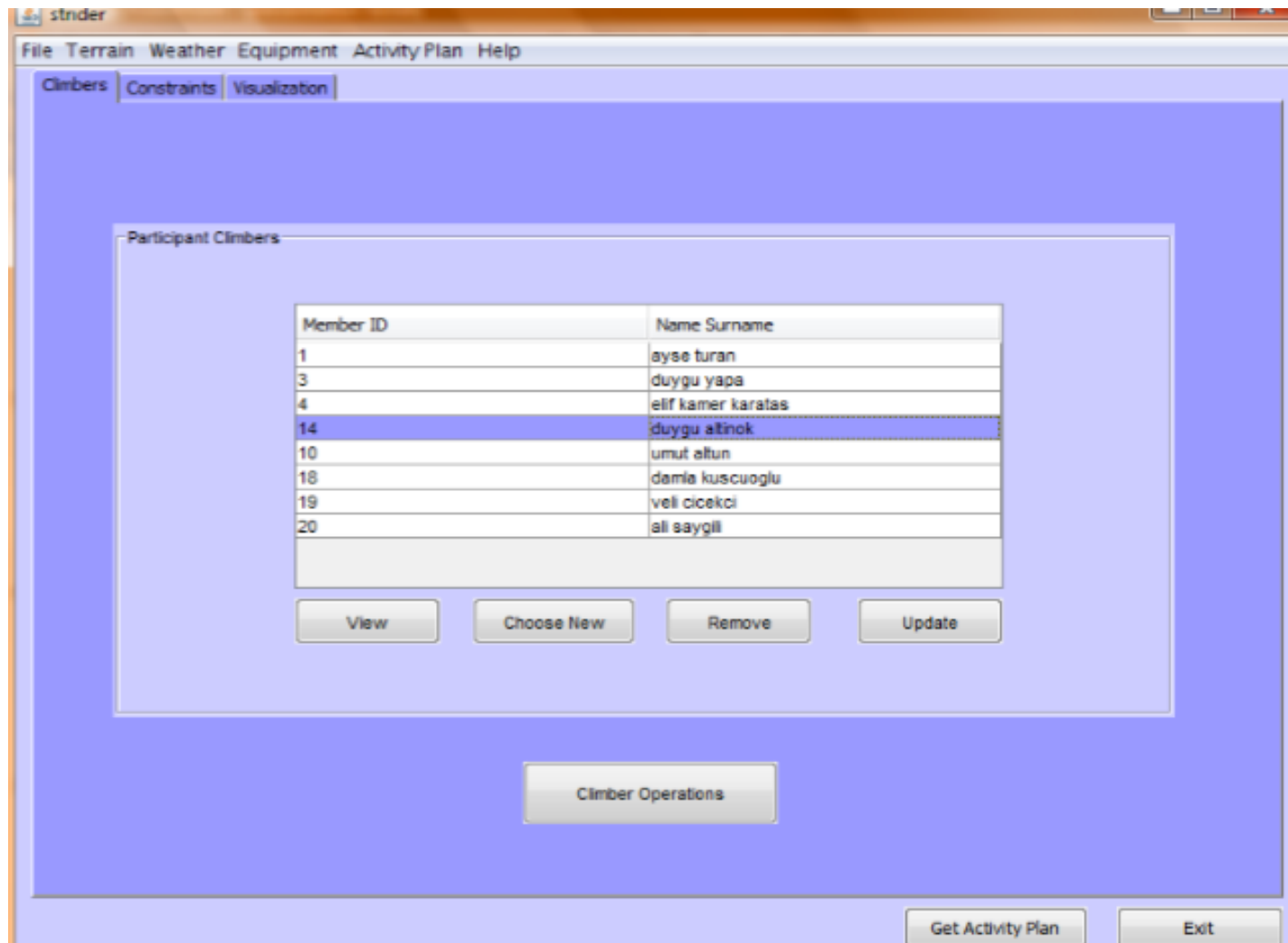
All Members Existing in the System:

Id	Name	Surname	Walking Speed (km/h)	Climbing Speed (m/h)	Carriage Capacity (kg)	Experience Level
1	ayse	turan	4.0	3.0	2.0	Level 1
3	duygu	yapa	5.0	4.0	4.0	Level 2
4	elif kamer	karatas	5.0	5.0	5.0	Level 3
6	aybala	turan	4.0	3.0	3.0	Level 3
9	deli deli	küpelii	5.0	3.0	5.0	Level 3
10	umut	altun	5.0	3.0	3.0	Level 4
12	emre	karakuzu	5.0	4.0	5.0	Level 4
13	tugrul	turan	6.0	4.0	3.0	Level 4
14	duygu	altinok	4.0	2.0	2.0	Level 2
15	tunc	findik	6.0	5.0	5.0	Level 5
16	zeynep	gorgulu	4.0	3.0	2.0	Level 1
17	esra	nartkaya	5.0	3.0	1.0	Level 3
18	damla	kuscuoglu	4.0	3.0	2.0	Level 2
19	veli	cicekci	5.0	3.0	2.0	Level 3
20	ali	saygili	6.0	4.0	4.0	Level 5

Add New Member Remove Update Close

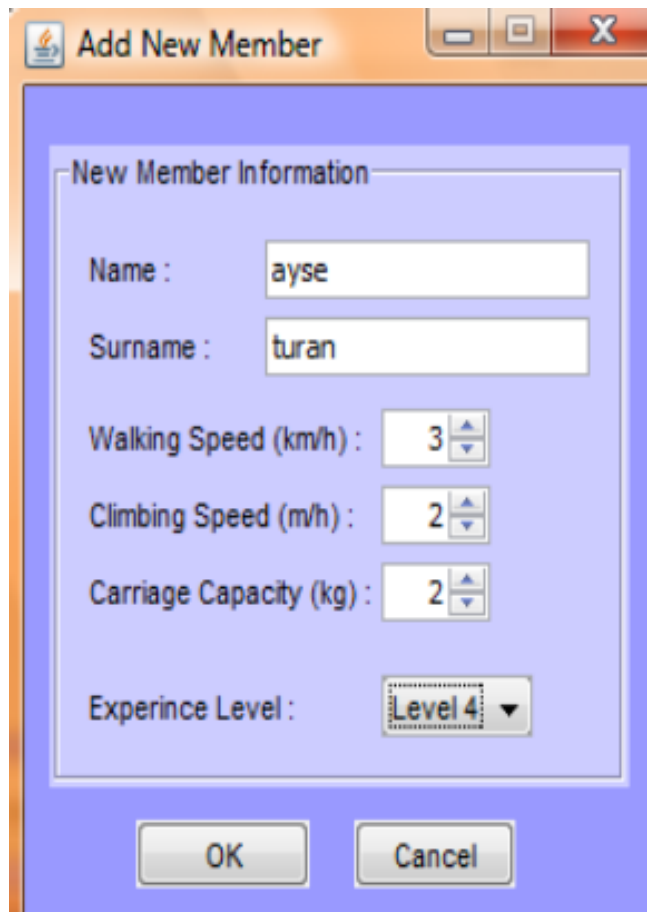
All members in the club

ScreenShots - cont'd



Members who will be participating in the activity

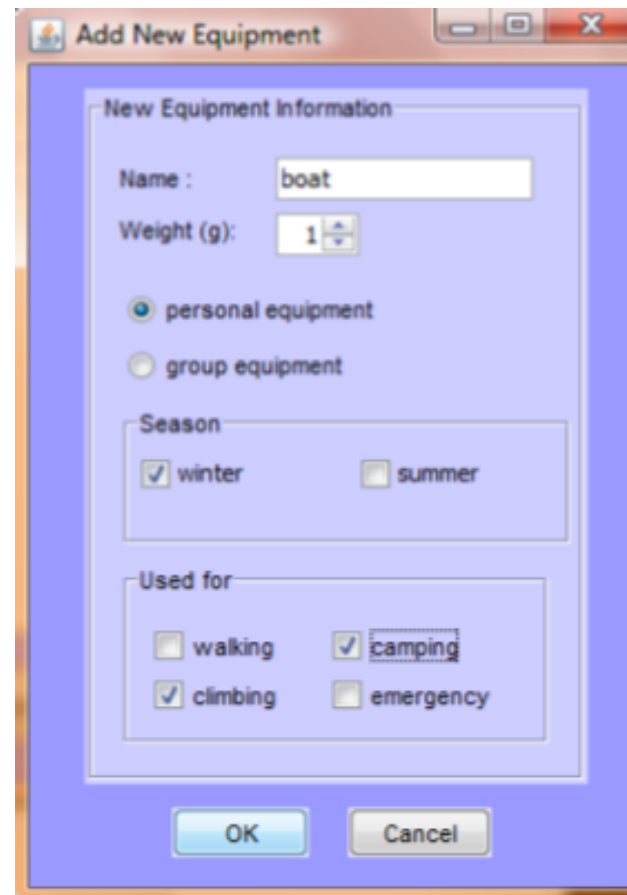
ScreenShots – Cont'd



The 'Add New Member' dialog box contains the following fields and controls:

- New Member Information**
 - Name :
 - Surname :
 - Walking Speed (km/h) :
 - Climbing Speed (m/h) :
 - Carriage Capacity (kg) :
 - Experince Level :
-
-

Adding member to the club



The 'Add New Equipment' dialog box contains the following fields and controls:

- New Equipment Information**
 - Name :
 - Weight (g) :
 - personal equipment
 - group equipment
 - Season**
 - winter
 - summer
 - Used for**
 - walking
 - camping
 - climbing
 - emergency
-
-

Adding equipment to the system