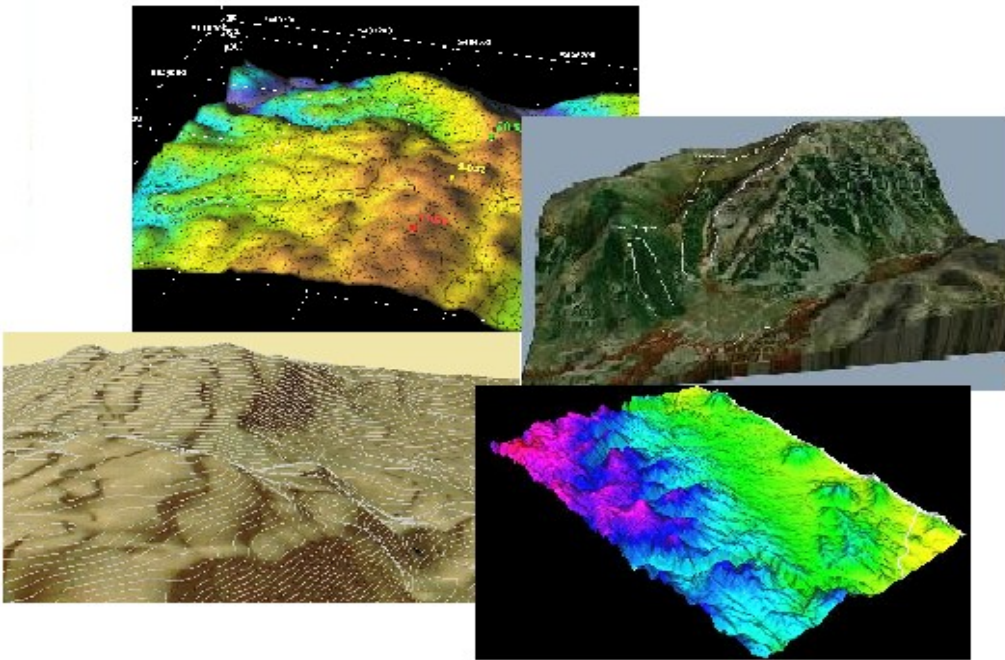


Duygu Yapa
Ayşe Turan
Duygu Altınok
Elif Kamer Karataş



THE STRIDER

[Software Specifications & Release Notes]

7.6.2009

Contents

<u>1. INTRODUCTION.....</u>	<u>3</u>
<u>2. FEATURES.....</u>	<u>3</u>
<u>3. TEST RESULTS.....</u>	<u>5</u>
<u>4. SCREENSHOTS.....</u>	<u>5</u>

1. INTRODUCTION

Mountain climbing is one of the most popular activities around the world. Although the idea of reaching a peak of a mountain attracts many people, it is also very risky activity. It includes many potential dangers like weather, falling rocks or avalanche, equipment failure, etc. To minimize the risks and potential dangers and provide a safe environment to the mountaineers, the necessary precautions should be taken and an activity plan should be well prepared. Many things like weather and terrain conditions, equipment planning, experience and endurance of the team members should be considered simultaneously.

We, as Sirius Software, has developed Strider, which is a software that provides a useful environment for mountaineers and mountaineering clubs for planning their climbing activities. It has many kind features that supply mountaineers' needs and reduce their burden when preparing an activity. Strider has a user-friendly Graphical User Interface, a Geokit based GIS features, well designed routing algorithm on maps.

2. FEATURES

Strider has the following capabilities:

- Climber Management
 - Add climbers to the system
 - Update climber's information
 - Remove climbers from the system
 - Specify participant climbers
 - View Participant climbers' information
 - Remove participant climbers without removing climber from the system
 - Update participant climber's information

- Equipment Management
 - Add new equipment to the system
 - Remove equipments
 - Update equipments' information
- Weather Management
 - Take weather from Internet
 - Set weather information manually
- 2D/3D Visualization Operations
 - Add terrain data to display in 2D
 - Mark coordinanates on 2D
 - Save 2D visualization
 - Visualize terrain in 3D
- Project Management
 - Open a new project
 - Save project
 - Open an existing project
- Activity Plan Management
 - See equipment, food and camp plan
 - Seeing route plan
 - Report activity plan
- Simulation Operations
 - Simulate Route on 3D

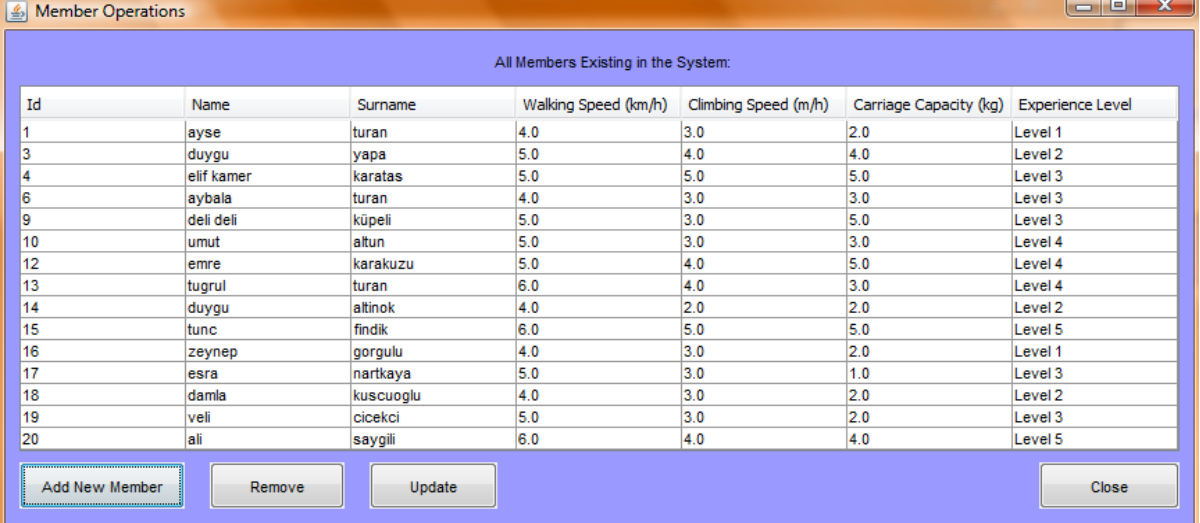
3. TEST RESULTS

All tests specified in Test Specification Report are performed one by one. All problems faced during the tests are solved. Now, Strider is running without errors.

With respect to our test experiences, Strider works best under below system features;

- Minimum 512 Mb RAM.
- 3D Graphics card
- Core duo processor.

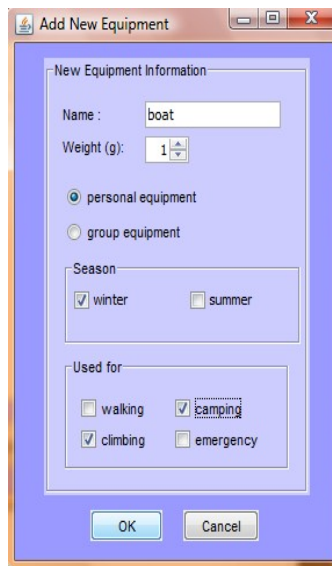
4. SCREENSHOTS



The screenshot shows a window titled "Member Operations" with a blue header bar. Below the header, it says "All Members Existing in the System:". The main area contains a table with 7 columns: Id, Name, Surname, Walking Speed (km/h), Climbing Speed (m/h), Carriage Capacity (kg), and Experience Level. The table lists 20 members. At the bottom of the window, there are four buttons: "Add New Member", "Remove", "Update", and "Close".

Id	Name	Surname	Walking Speed (km/h)	Climbing Speed (m/h)	Carriage Capacity (kg)	Experience Level
1	ayse	turan	4.0	3.0	2.0	Level 1
3	duygu	yapa	5.0	4.0	4.0	Level 2
4	elif kamer	karatas	5.0	5.0	5.0	Level 3
6	aybala	turan	4.0	3.0	3.0	Level 3
9	deli deli	küpelı	5.0	3.0	5.0	Level 3
10	umut	altun	5.0	3.0	3.0	Level 4
12	emre	karakuzu	5.0	4.0	5.0	Level 4
13	tugrul	turan	6.0	4.0	3.0	Level 4
14	duygu	altınok	4.0	2.0	2.0	Level 2
15	tunc	findik	6.0	5.0	5.0	Level 5
16	zeynep	gorgulu	4.0	3.0	2.0	Level 1
17	esra	nartkaya	5.0	3.0	1.0	Level 3
18	damla	kuscuoglu	4.0	3.0	2.0	Level 2
19	veli	cicekci	5.0	3.0	2.0	Level 3
20	ali	saygılı	6.0	4.0	4.0	Level 5

Figure 1. Member Operations Window



Add New Equipment

New Equipment Information

Name :

Weight (g):

☒ personal equipment
☐ group equipment

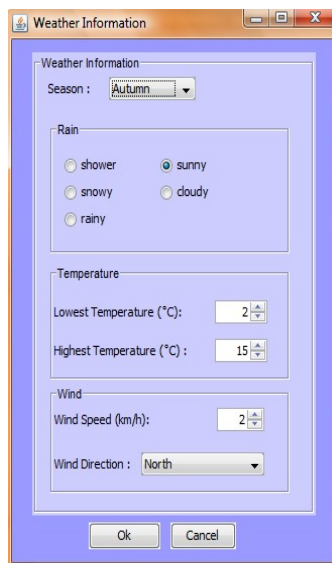
Season

☒ winter ☐ summer

Used for

☐ walking ☒ camping
☒ climbing ☐ emergency

Figure 2. Adding New Equipment



Weather Information

Weather Information

Season :

Rain

☐ shower ☒ sunny
☐ snowy ☐ cloudy
☐ rainy

Temperature

Lowest Temperature (°C):

Highest Temperature (°C) :

Wind

Wind Speed (km/h):

Wind Direction :

Figure 3. Weather Information

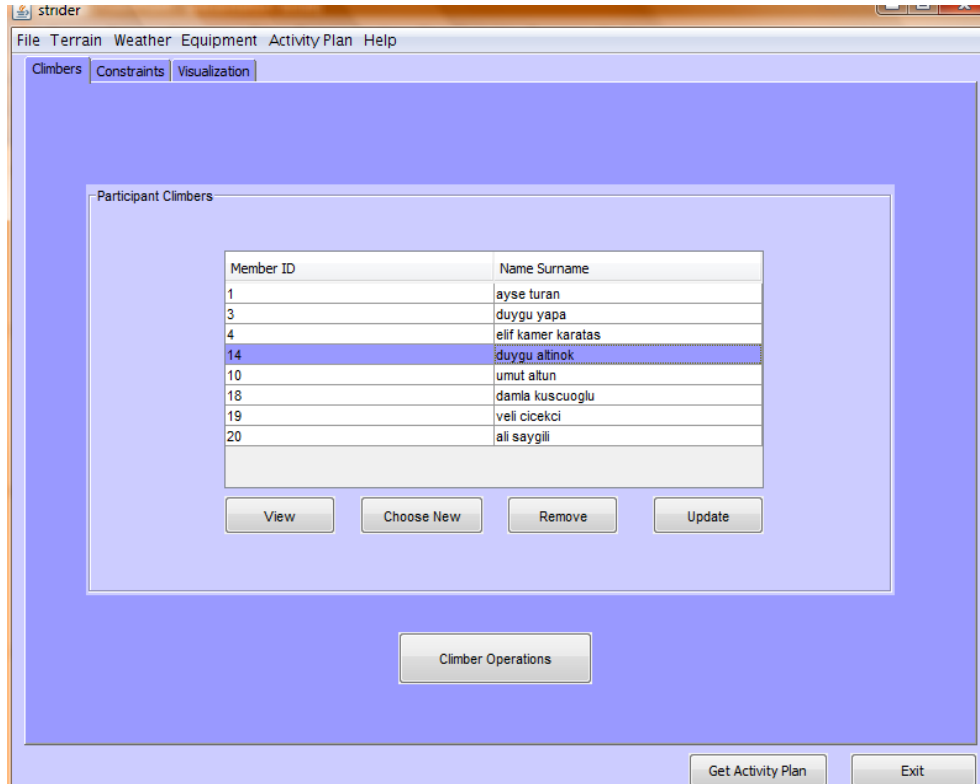


Figure 4. Participating Climbers Window

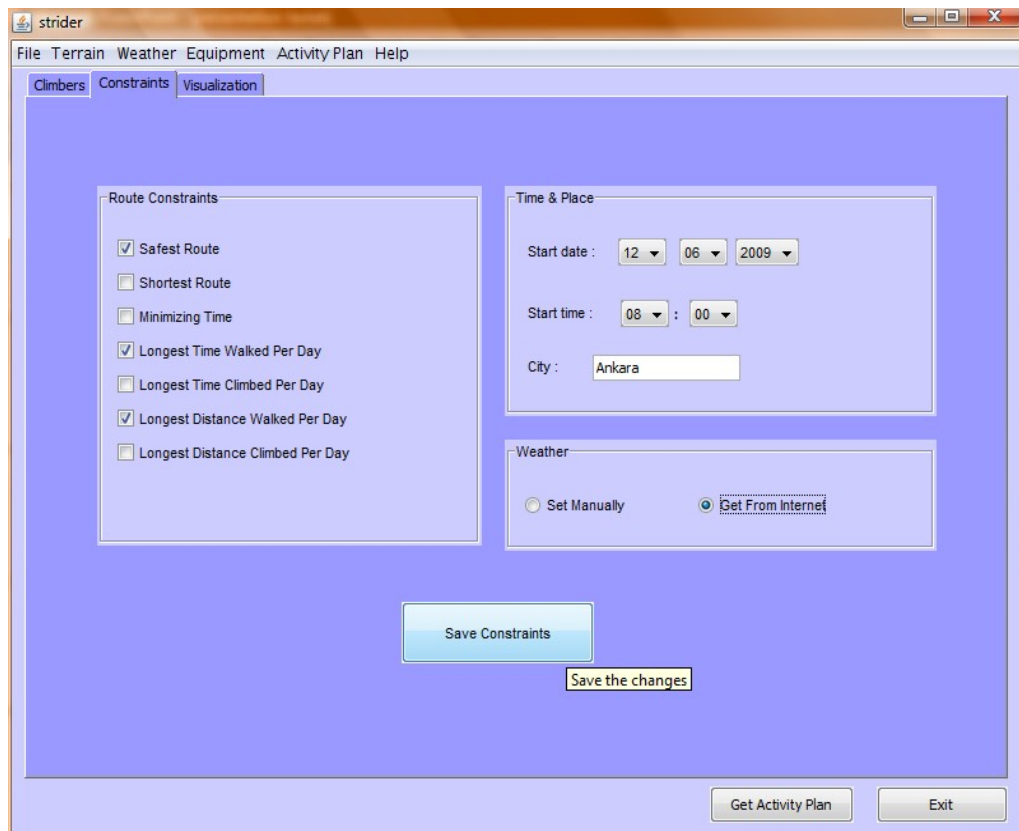


Figure 5. Constraints Tab

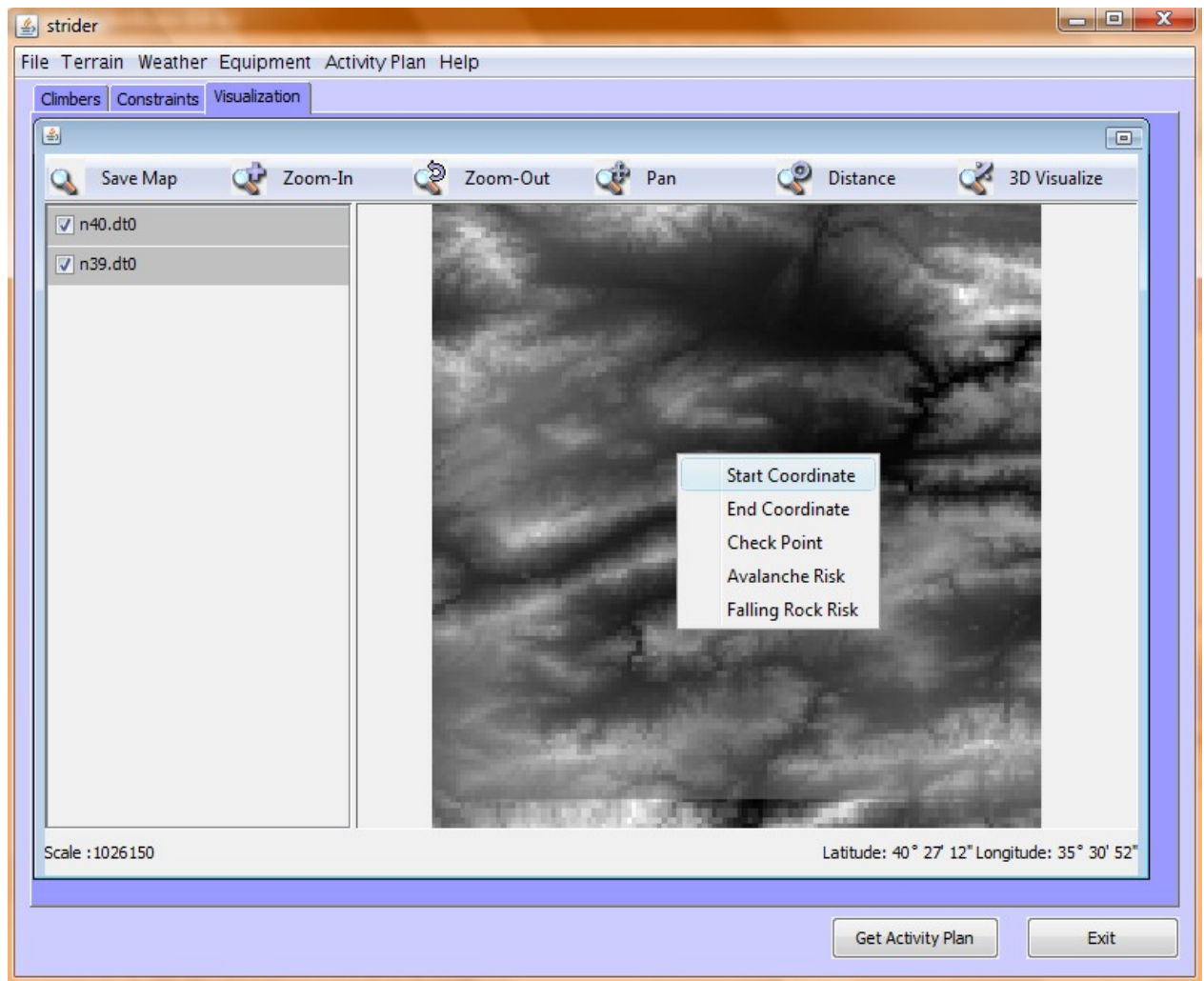


Figure 6. Marking coordinates

The screenshot shows the 'Coordinates' dialog box. It contains a table with three columns: Type, Latitude, and Longitude. The table lists five marked coordinates. Below the table are two buttons: 'Remove Selected Coordinates' and 'Close'.

Type	Latitude	Longitude
Start Coordinate	39:45:46 N	035:29:05 E
End Coordinate	39:30:48 N	035:32:49 E
Check Point	39:43:34 N	035:14:06 E
Check Point	39:23:10 N	035:38:45 E
Avalanche Risk Point	39:13:56 N	035:50:02 E

Figure 7. Marked Coordinates

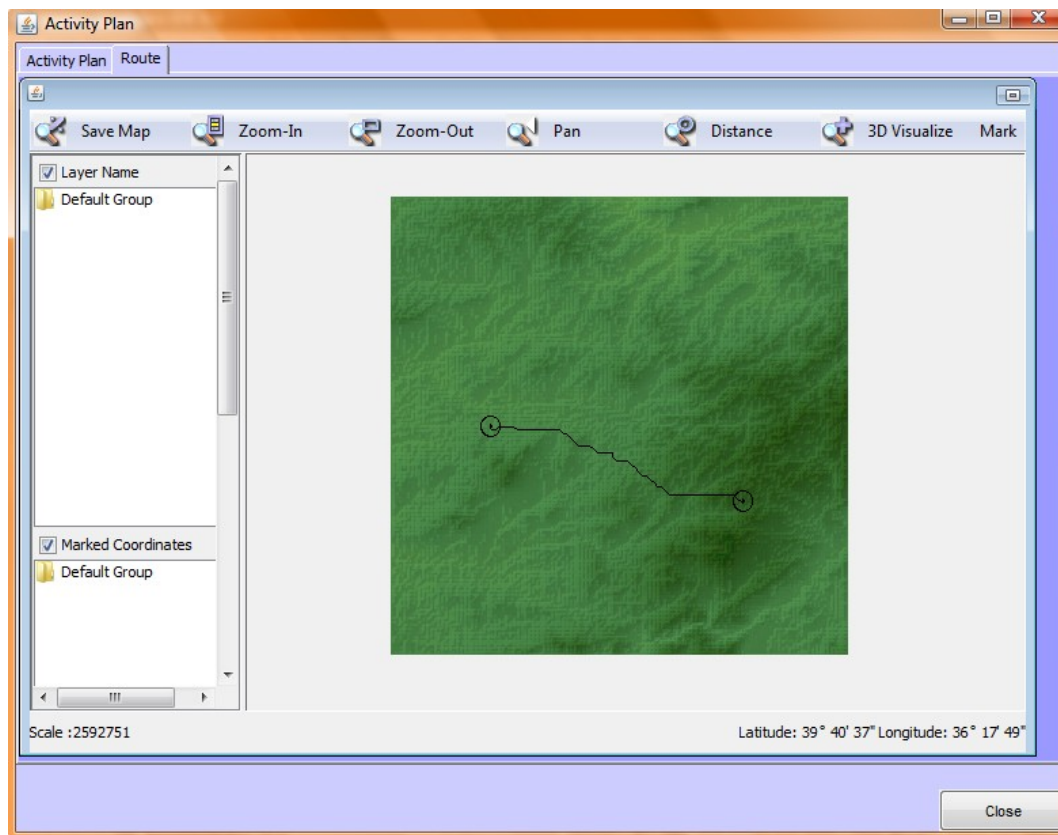


Figure 8. Displaying Route on 2D Terrain



Figure 9. 3D Visualization of Aladag

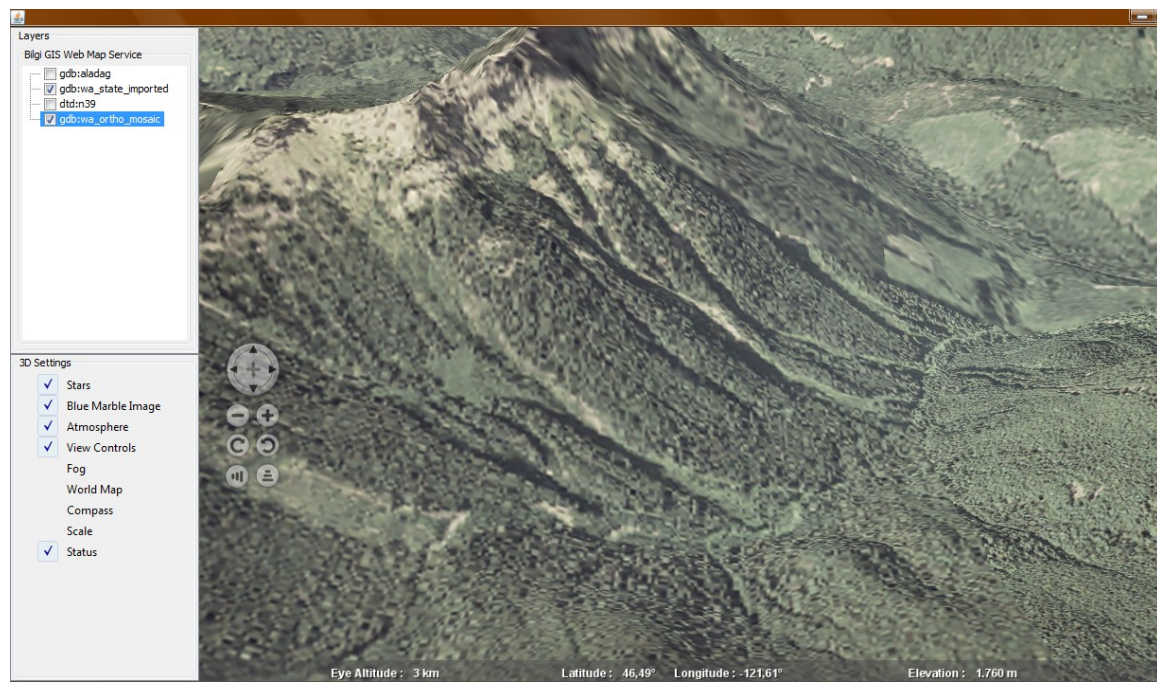


Figure 10. Another 3D Visualization