

WIRELESS ACCESS POINT
AP-490

USER MANUAL

By

COSS

This manual has been prepared by COSS. All rights reserved.

OVERVIEW

This manual guides you how to use AP-490 54Mbps 802.11g Wireless Access Point/Repeater/Bridge with LCD functionality.

1.INTRODUCTION

AP-490 is an upper version of AP-400 produced by AirTies. The main difference between AP-490 and AP-400 is the graphical LCD. This module will show the general information easily.

User can see wireless networks that AP-490 find, connected PCs' MAC addresses and number of PCs and networks. The most important key is that users do not need to establish a connection between AP-490 and PC to learn the information.

2.MAIN FEATURES

Ability to display information on LCD screen. The information is:

- MAC addresses of the connected PC's to the device.
- Networks around the device.
- Number of PC's connected.
- Number of networks around.
- Language option (currently Turkish/English).

3.MINIMUM SYSTEM REQUIREMENTS

The AP-490 does not need to be connected to a PC during ordinary operation. In order to start up AP-490, you will need only a power adapter.

4.MENU STRUCTURE OF AP-490

There are four buttons for menu control and a button for reset the AP-490. In the start page product name and company name are displayed. You can pass the main menu by pressing the ENTER button. In the main menu there are three submenus which are Connected PCs, Networks and Option. With UP and DOWN buttons, you can move in the main menu and submenus. Again you can navigate these submenus by pressing ENTER button and you can return the main menu by pressing BACK button. Main Menu is viewed in Figure 4.1

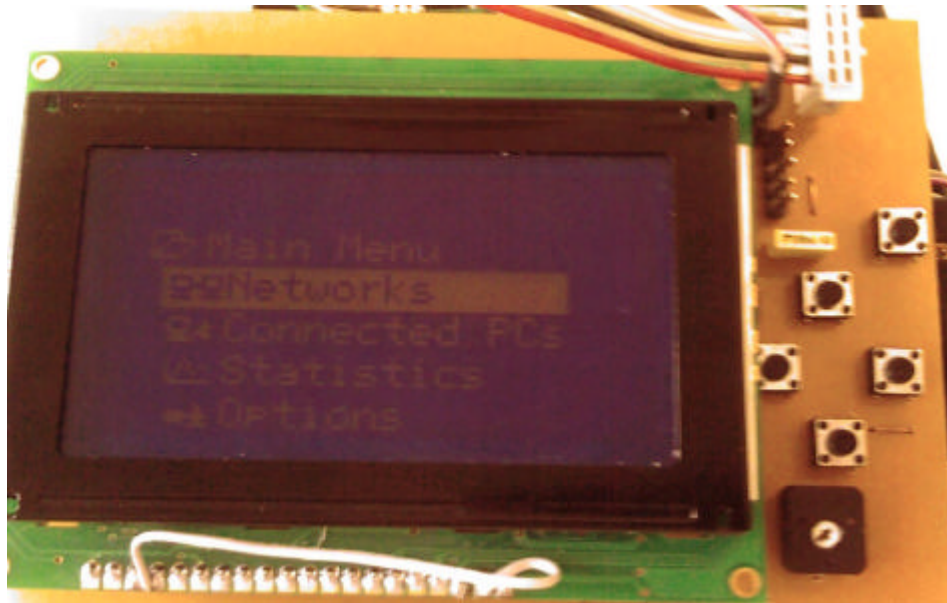


Figure 4.1

4.1.CONNECTED PCs

In this submenu you can learn connected PCs' MAC addresses. In a page, at most 4 connected PCs can be viewed. In Figure 4.2, Connected PCs submenu is shown.

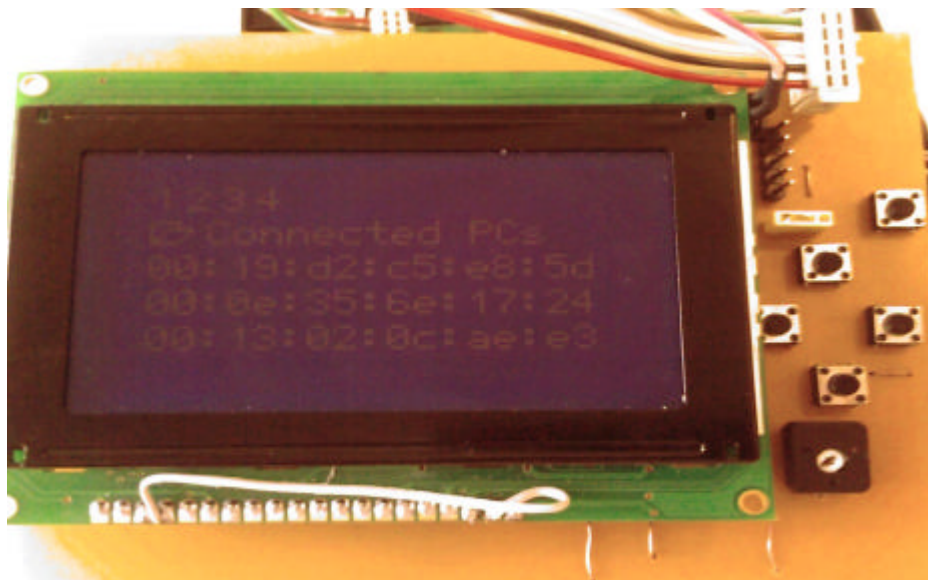


Figure 4.2

4.2.NETWORKS

In the network submenu, you can view wireless networks detected by AP-490. Networks submenu is viewed in Figure 4.3.

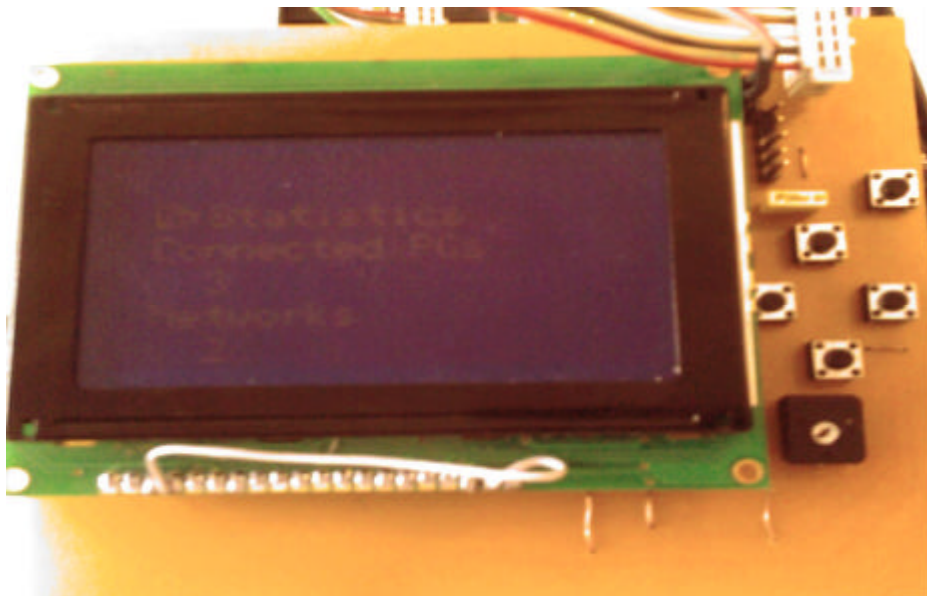


Figure 4.3

4.3.STATISTICS

In the statistics submenu, user is able to see:

- Number of PC's connected to the network.
- Number of networks around.



4.4.OPTION

In the option submenu, language of AP-490 can be changed. There are two choices English and Turkish. English is selected default. Option submenu is shown in Figure 4.4. Main menu after language option changed, can be seen in Figure 4.5.

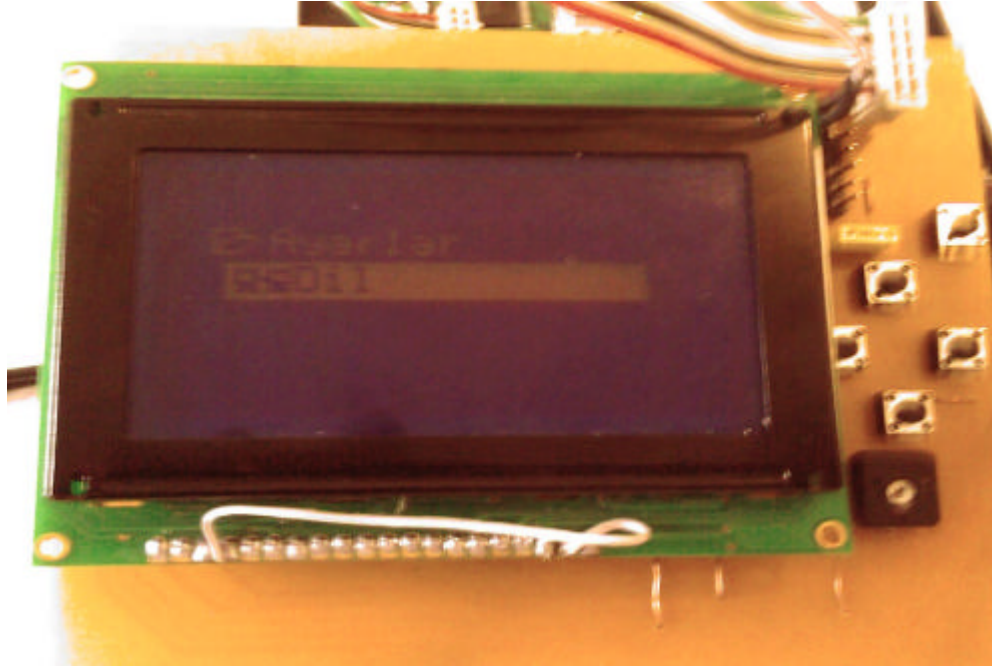


Figure 4.4

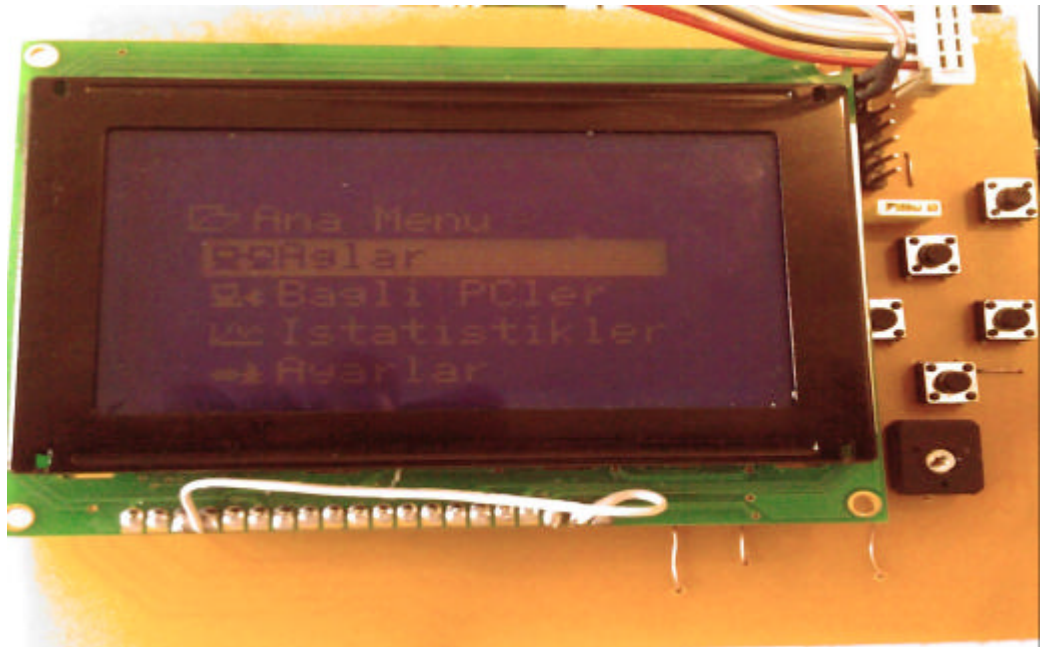


Figure 4.5