

METU CENG491 2015 FALL

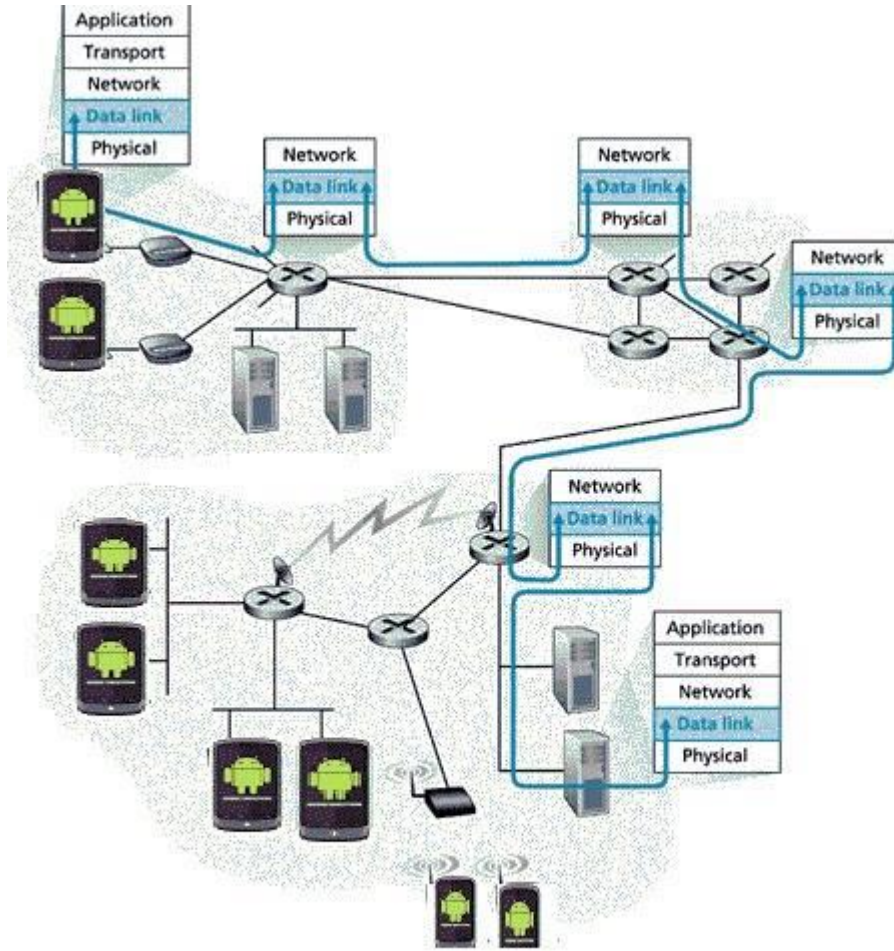
START-UP DOCUMENT

<16>

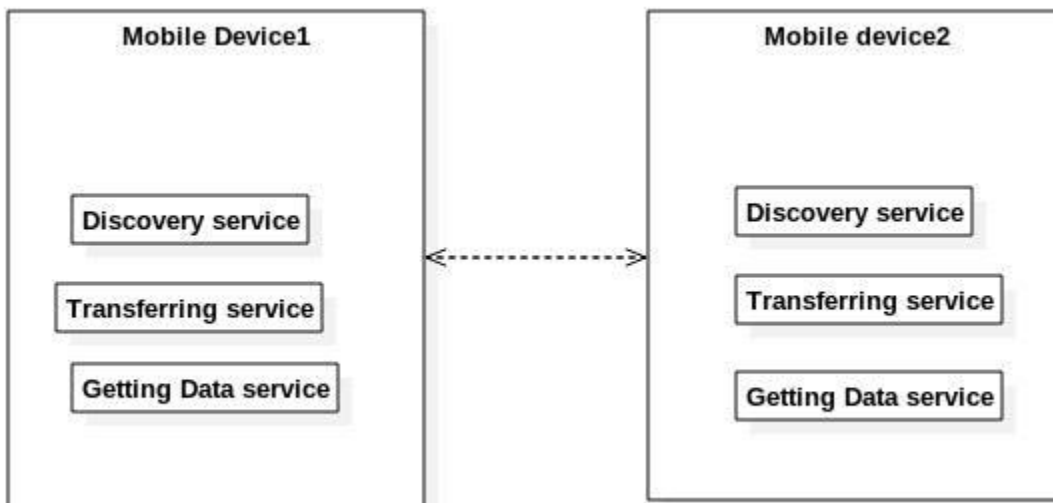
Group Name: *FixIT*

Project Name: *A Broadcasting System for Smart Cities*

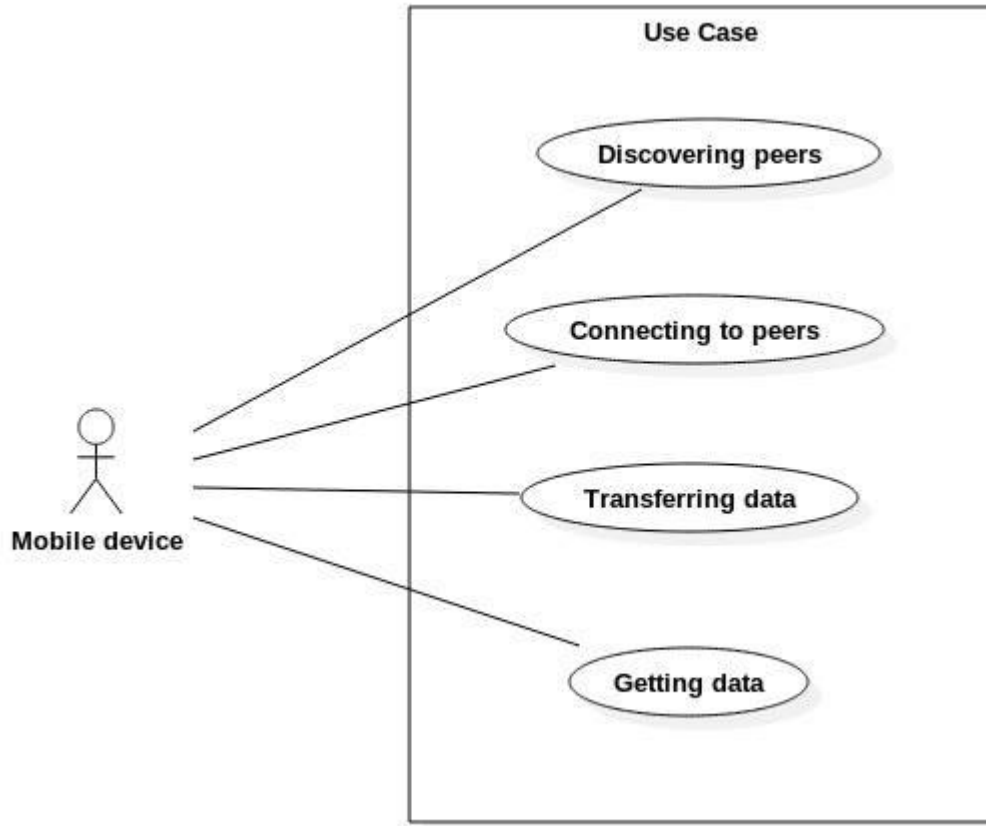
1. System Architecture



1. Overall system architecture diagram



2. Component Diagram



3. Use Case Diagram

2. Tentative Time Plan

TaskID	Short Name	Description
T1	Discover Wi-Fi	Developing an Android application that shows Wi-Fi in the surrounding environment.
T2	Literature review	Researching the topics related to our project, reading academic papers.
T3	Wi-Fi router	Learning Wi-Fi router software, raw_socket and OpenWRT.
T4	Raw_socket	Creating an application related with raw_socket.
T5	Discover device	Developing an Android application that discovers the devices which are on the same coverage area of a certain Wi-Fi router.
T6	Data link layer	Creating an application that communicates two Android devices in data link layer without using Internet connection.
T7	User interface	Improving the user interface of the above application.
T8	Test	Testing the application.
T9	SRS & Presentation	Preparing SRS documentation and presentation.

	Iteration1	Iteration2	Iteration3
T1	■		
T2	■	■	
T3	■	■	
T4	■	■	
T5		■	
T6		■	■
T7			■
T8			■
T9			■

3. Deliverables

Deliverable	Description	When? (Sprint#)
D1	Discover surrounding Wi-Fi routers.	Sprint1
D2	Developing application that discovers the surrounding devices which are connected to a certain Wi-Fi router.	Sprint2
D3	Developing an Android application which communicates two mobile devices in data link layer.	Sprint3

4. Workload Distribution

Fill in the following table to distribute the workload for the first semester among your team members.

	Sprint - I	Sprint - II	Sprint - III
Gulsah Sabirsiz	T1,T3,D1,T2	T3,T2,T5,D2,D3,T6	T6,T7,T9,D3
Ceyda Tosun	T1,T4,D1,T2,T3	T4,T2,D3,T3,T6	T6,T8,T9,D3
Gulnaz Shaidolda	T2,T3,T4	T2,T3,T4,T5,D2,D3,T6	T6,T8,T9,D3