

# METU CENG491 2015 FALL

## *START-UP DOCUMENT*

**G12P25**

**Group Name:** *PEM*

**Project Name:** *FoodFeed*

## 1. System Architecture

- *Draw the overall system architecture diagram. This should include (but it is not limited to) the components of the system, the interactions among the components and their dependencies.*
- *Identify and describe each component (including subcomponents if any), their interactions and dependencies clearly.*
- *Specify the user interaction model.*

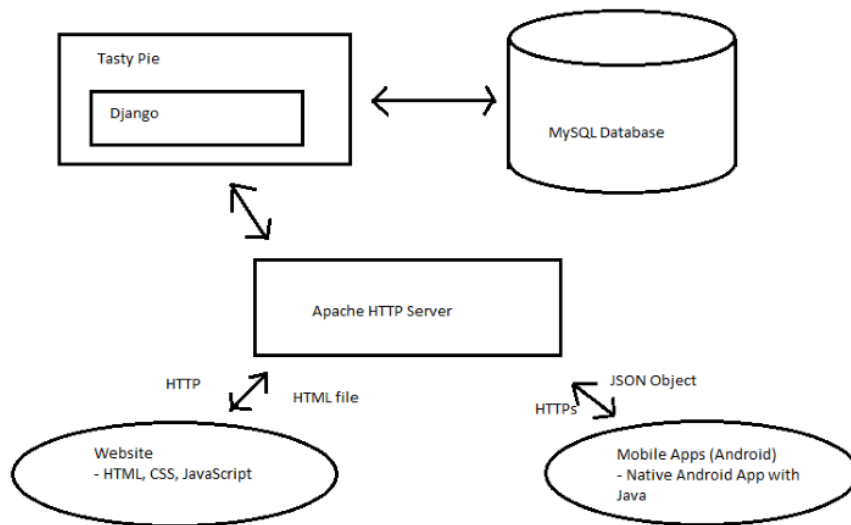


Figure 1. System Architecture Diagram

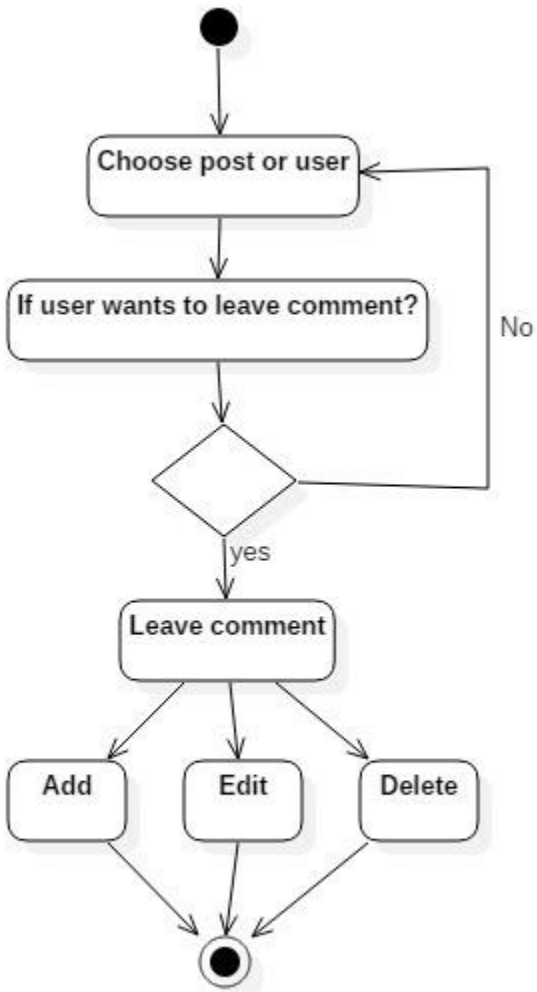


Figure 2. Comment Flow

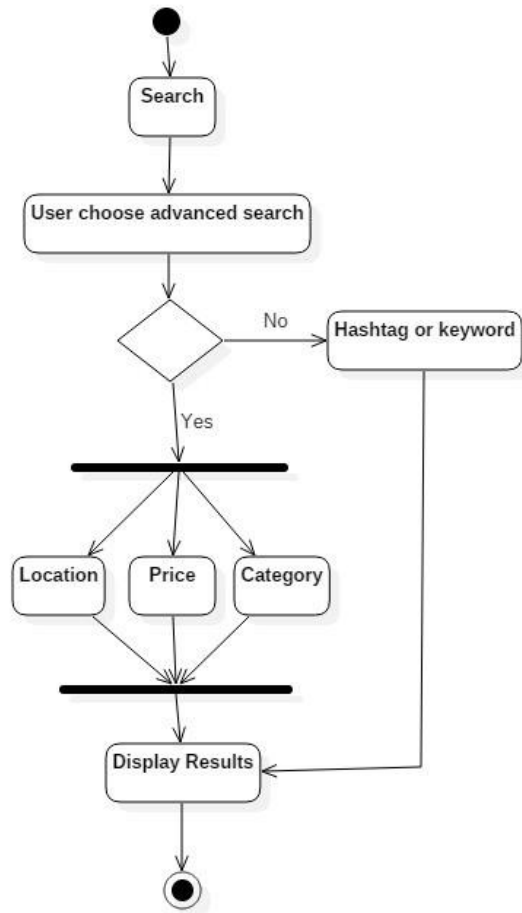


Figure 3. Search Flow

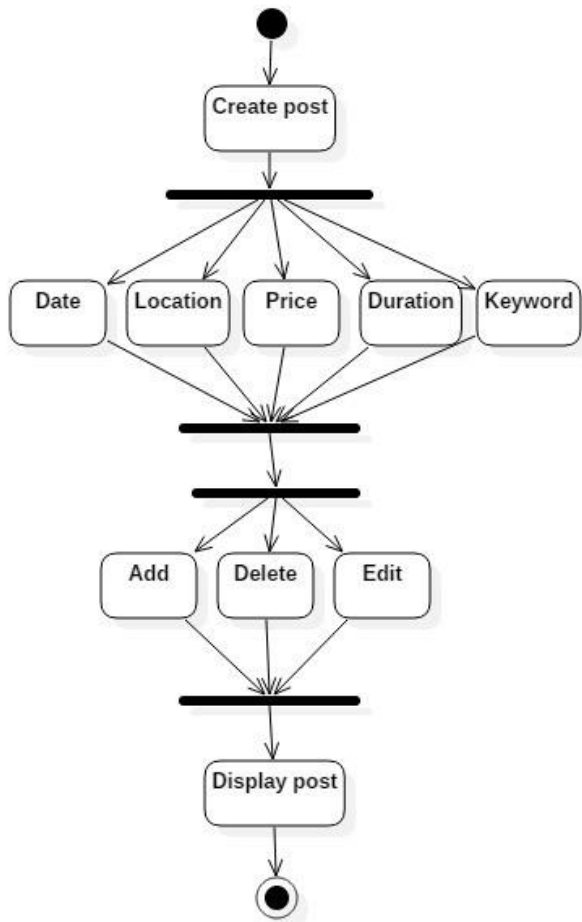


Figure 4. Create Post Flow

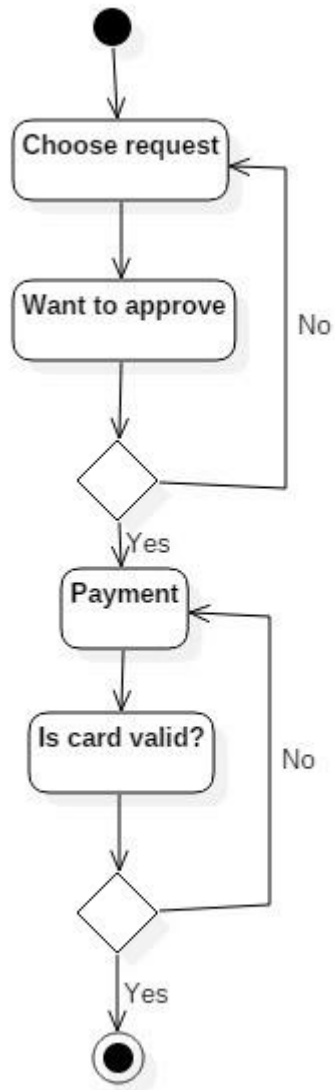


Figure 5. Request/Payment Flow

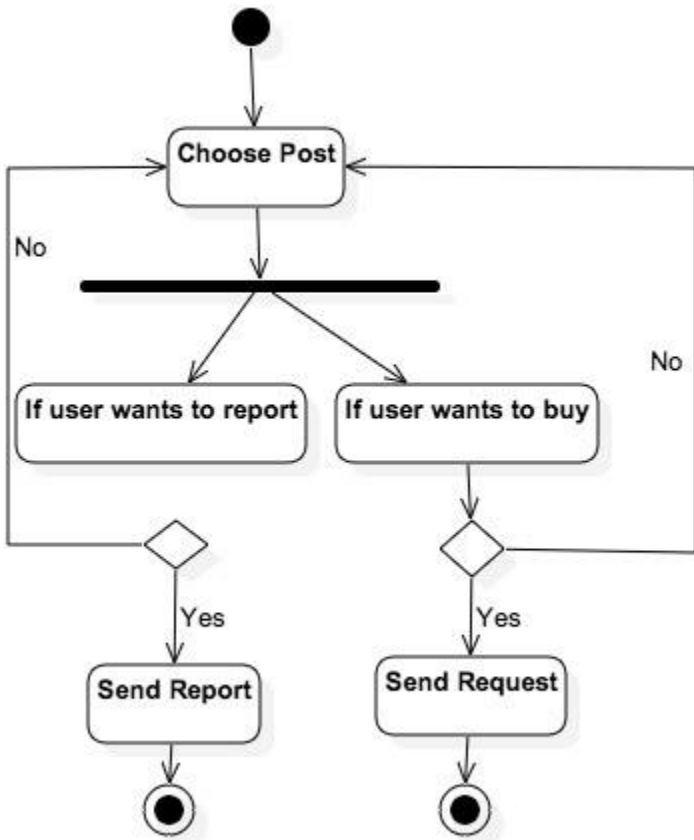


Figure 6. Post Request/Report Flow

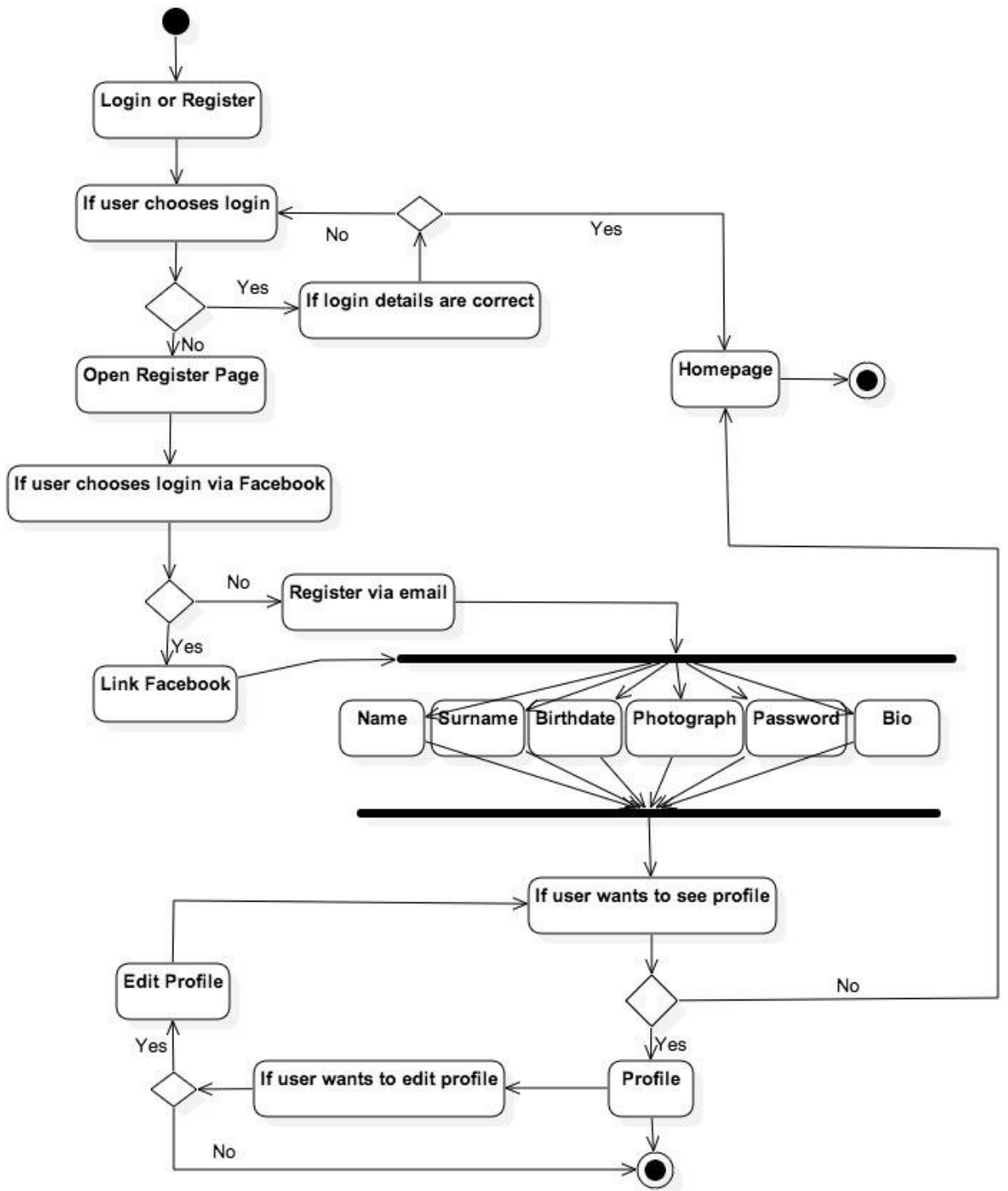


Figure 7. Login/Register/Profile Flow

## 2. Tentative Time Plan

- Identify and itemize all tasks to be performed as a team in the first semester. Assign a unique TaskID for each task. Give a short name and brief description for each identified task.

TaskID	Short Name	Description
T1	Login (Android)	Login function for the Android App manually or with a Facebook account.
T2	Register (Android)	Register function for the Android App manually or with a Facebook account.
T3	Profile (Android)	Backend and frontend development of the profile pages for the Android app.
T4	Main Feed (Android)	Backend and frontend development of the main feed for the Android app.
T5	Posts (Android)	Backend and frontend development of the post objects for the Android app.
T6	Request/Approval System (Android)	Backend and frontend development of the request for an available food post and approval of the available requests for the Android app.
T7	Basic Search (Android)	Backend and frontend development of the basic search which functions as searching for a post with a keyword or a category for the Android app.
T8	Login (Website)	Login function for the web-site manually or with a Facebook account.
T9	Register (Website)	Register function for the web-site manually or with a Facebook account.
T10	Profile (Website)	Backend and frontend development of the profile pages for the website.
T11	Main Feed (Website)	Backend and frontend development of the main feed for the website.
T12	Posts (Website)	Backend and frontend development of the post objects for the website.
T13	Request/Approval System (Website)	Backend and frontend development of the requests for an available food post and approval of the available requests for the website.
T14	Basic Search (Website)	Backend and frontend development of the basic search which functions as searching for a post with a keyword or a category for the website.

- Construct your time plan as a simplified Gantt chart, as shown in the following table.

	Iteration1	Iteration2	Iteration3
T1	■		
T2	■		
T3		■	
T4		■	■
T5		■	■
T6			■
T7			■
T8	■		
T9	■		
T10		■	
T11		■	■
T11		■	■
T12			■
T14			■



### 3. Deliverables

- *Identify and list all deliverables of your project for the first 3 sprints.*
- *A deliverable is some component or sub-component, which is running and demonstrable to your assistant and your supervisor. That deliverable is of course subject to improvement over time.*
- *Fill in the following table:*

<b>Deliverable</b>	<b>Description</b>	<b>When? (Sprint#)</b>
D1	A mobile application which is capable of authenticated login and register functions.	1
D2	In addition to the first version, profile pages, main feed and post pages and related functionalities will be included for the mobile app.	2
D3	Request/approval system of the posts and a search functionality will be included for the mobile app.	3
D4	A simple website which is capable of authenticated login and register functions.	1
D5	In addition to the first version, profile pages, main feed and post pages and related functionalities will be included for the web site.	2
D6	Request/approval system of the posts and a search functionality will be included for the web site.	3

#### 4. Workload Distribution

Fill in the following table to distribute the workload for the first semester among your team members.

	<b>Sprint - I</b>	<b>Sprint - II</b>	<b>Sprint - III</b>
Başak Kalfa	T8,T9,D4	T10,T11,T12,D5	T11,T12,T13,T14,D6
Esmâ Göksal	T1,T2,D1	T3,T4,T5,D2	T4,T5,T6,T7,D3
Mustafa Nacar	T1,T2,D1	T3,T4,T5,D2	T4,T5,T6,T7,D3
Zeynep Şengil	T8,T9,D4	T10,T11,T12,D5	T11,T12,T13,T14,D6