

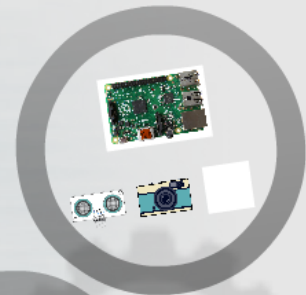
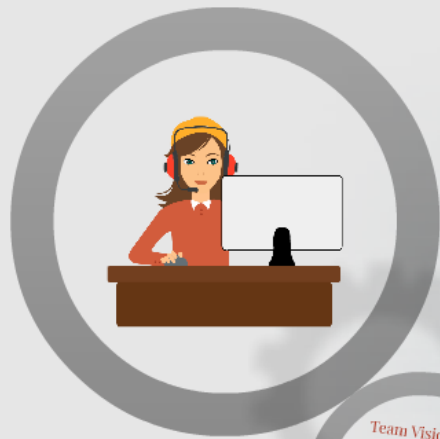
BEFRIEND

Hardware assister for blind people



BEFRIEND

Hardware assister for blind people



What is our motivation?

Some small everyday tasks can be challenging for blind people. Befriend is designed to **create a sense of vision**, solve problems that they have to face with and make them take more part in life.

How the system works?

Befriend detects the objects using image processing techniques and the distance using sensor. Blind people are able to send images and get help through a client-server network communication module.

What is our solution?

A hardware tool helping blind people by giving information about the environment and creating a remote communication with a relative. Information of recognized texts, distance and size of objects etc. will be provided through headphones.

THANK YOU

BEFRIEND

Change the way you see the world!

Obtain data from environment
Process those data
Inform user vocally

Real Time Video Streaming on Web

- UDP Client-Server Communication
- Real time streaming of camera mounted on hardware
- Textfield to write directives to send back to the person in need

Image Processing



Team Visionary

Members:
Elvin Sait
Elvin Sait
Elvin Sait
Elvin Sait
Elvin Sait

Advisors:
Sait Taz
Instructor: Alkan Ozgur
Elvin Sait
Assistant: Sait Taz

Team Visiondary

Members:

Ilkyaz Yasal
Okan Altingövde
Sema Köse
Mehmet Can Avaroğlu

Advisor: Sibel Tarı

Instructors: Atilla Özgit
Emre Akbaş

Assistant: Serdar Çiftçi

BEFRIEND

Change the way you see the world!

Obtain data from environment
Process those data
Inform user vocally

What is our motivation?

Some small everyday tasks can be challenging for blind people. BeFriend is designed to **create a sense of vision**, solve problems that they have to face with and make them take more part in life.

world!



What is our solution?

A hardware tool helping blind people by giving information about the environment and creating a remote communication with a relative. Information of recognized texts, distance and size of objects etc. will be provided through headphones.

How the system works?

BeFriend detects the objects using **image processing techniques** and the distance using **sensor**. Blind people are also able to send images and get help through a **client-server network** communication module.

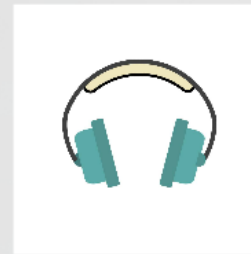
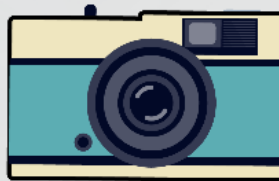
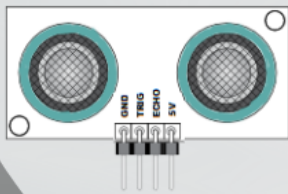
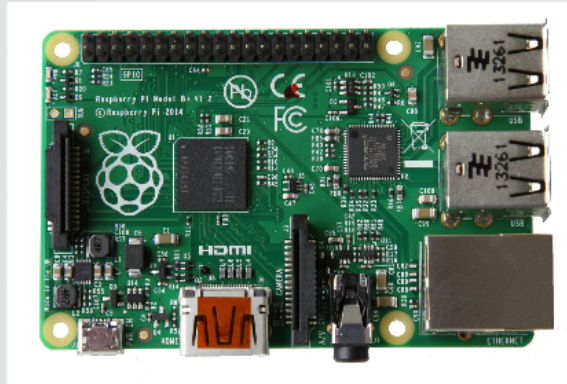


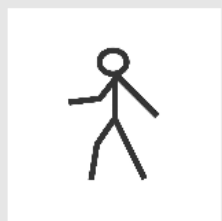
Image Processing



Optical Character Recognition



Road Sign Detection



Pedestrian Detection



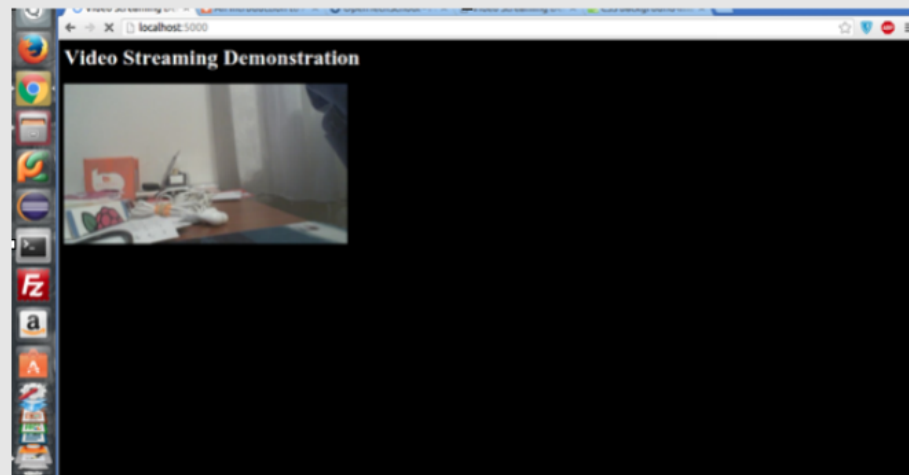
Object Recognition



Logo Detection

Real Time Video Streaming on Web

- UDP Client-Server Communication
- Real time streaming of camera mounted on hardware
- Textfield to write directives to send back to the person in need

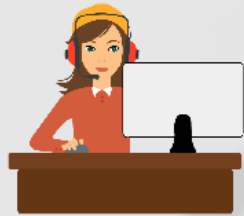




THANK YOU

BEFRIEND

Hardware assister for blind people



What is our motivation?

Some small everyday tasks can be challenging for blind people. Befriend is designed to **create a sense of vision**, solve problems that they have to face with and make them take more part in life.

How the system works?

Befriend detects the objects using image processing techniques and the distance using sensor. Blind people are able to send images and get help through a client-server network communication module.

What is our solution?

A hardware tool helping blind people by giving information about the environment and creating a remote communication with a relative. Information of recognized texts, distance and size of objects etc. will be provided through headphones.

THANK YOU

BEFRIEND

Change the way you see the world!

Obtain data from environment
Process those data
Inform user vocally

Real Time Video Streaming on Web

- UDP Client-Server Communication
- Real time streaming of camera mounted on hardware
- Textfield to write directives to send back to the person in need

Image Processing



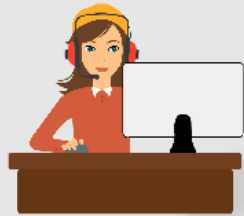
Team Visionary

Members:
David Sadi
Emin Arslan
Yasin Kaya
Hakan C. Arslan

Advisors:
Sibel Taz
Instructor: Alihan Ozyurt
Ernest Akbulut
Assistant: Sema Ciftci

BEFRIEND

Hardware assister for blind people



What is our motivation?

Some small everyday tasks can be challenging for blind people. Befriend is designed to **create a sense of vision**, solve problems that they have to face with and make them take more part in life.

How the system works?

BeFriend detects the objects using image processing techniques and the distance using sensor. Blind people are also able to send images and get help through a client-server network communication module.

What is our solution?

A hardware tool helping blind people by giving information about the environment and creating a remote communication with a relative. Information of recognized texts, distance and size of objects etc. will be provided through headphones.

THANK YOU

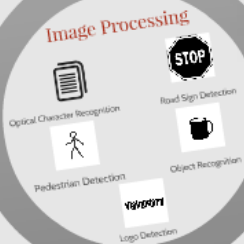
BEFRIEND

Change the way you see the world!

- Obtain data from environment
- Process those data
- Inform user vocally

Real Time Video Streaming on Web

- UDP Client-Server Communication
- Real time streaming of camera mounted on hardware
- Textfield to write directives to send back to the person in need



Adres: Sibel Tan
İnstrüktör: Atilla Özgür
Erişir Altın
Asistanlar: Serkan...



Road Sign Detection



Object Recognition



Logo Detection